



# On-demand learning platform tailored for GI clinical research operations

Personalized training pathways exclusive to Iterative Health's site network deepens expertise, optimize workflows, and unlock growth potential

## Course curriculum designed by experts in GI clinical research

### Specialized courses that benefit everyone

Principal Investigators & Sub Investigators

New Hire & Experienced Clinical Research Coordinators



50+

Tailored learning courses, specific to end-to-end GI clinical research operations



Multiple courses applicable for CE certification maintenance through ACRP and SOCRA



Interactive learning modules supported by a growing library of resources and templates



Dedicated support from Iterative Health's Professional Services Team



Available 24/7 for on-demand training



Accessible on web & mobile



## Iterative Health Products

AI-Recruitment: Integrating into your Clinical Research Workflow  
AI- Recruitment Findings Report  
AI- Recruitment: *How We Process, Analyze, & Prioritize Data*  
Patient Journey: *Recruitment – Randomization*

## GI Disease Specific

GI Research: *Crohn's Disease*  
GI Research: *Ulcerative Colitis*  
GI Research: *Simplified Endoscopic Score for Crohn's Disease (SES-CD)*  
GI Research: *Mayo Endoscopic Score (MES) – Ulcerative Colitis*

## Conducting Clinical Research

Understanding the Roles & Responsibilities of the Principal Investigator in Clinical Research  
Understanding the Roles & Responsibilities of Clinical Research Teams  
Understanding the Roles & Responsibilities of the IRB  
Key Elements of the Drug Development Process  
Clinical Research Ethical Conduct Standards  
Preparing Your Clinical Research Team & Site for a New Trial  
Managing a Clinical Research Trial & Monitor Visits  
How to Manage a Site Audit or Inspection  
Understanding a Clinical Trial Protocol



## Clinical Regulatory Overview

Regulatory Documents  
Good Documentation Practice (GDP)  
Institutional Review Board (IRB)  
Monitoring Visits  
Investigator Site File (ISF) Maintenance  
Notes to File and Footnotes  
Corrective & Preventative Actions (CAPA)  
Adverse Event, Serious Adverse Event, and Protocol Deviation Overview  
Study Closeout



## Clinical Regulatory Best Practices

FDA 1572  
 Trial Protocols  
 Training Logs  
 Delegation of Authority Log  
 ISF: *Study Start-up*  
 ISF: *Study Conduct*  
 ISF: *Study Closeout*  
 Investigator Brochure  
 Financial Disclosure Form



## RealTime™ CTMS

eDocs FAQs  
 Building Financial Templates in RealTime™  
 RealTime™ CRC Workflow  
 RealTime™ Overview  
 RealTime™ PI Guide  
 Key RealTime™ CTMS Administrative Reports  
 CTMS Functions that Impact Financials  
 Source Document Building Best Practices  
 How to File a 1099-NEC for a Research Patient  
 Invoicing in RealTime™  
 Financial QC & Reconciling



## Patient Journey: Recruitment–Randomization

Elements of Patient Recruitment  
 Patient Recruitment Best Practices  
 Patient Status Definitions  
 Identifying Elements of Informed Consent  
 Speaking to Patients About a Study Protocol & Informed Consent  
 Mitigating Screen Failures  
 Recruitment Conversation Examples



## Additional Resources

CLIA & Submission  
 EHR Prescreening  
 eSource Process for Unscheduled Events & Repeat Procedures  
 CVs Within RealTime™  
 Contracting With 3rd Parties for Trial Procedures  
 Preparing for a Monitor Visit  
 Study Feasibility  
 Group Training Log  
 Site Training Log  
 SOP Training Log  
 Clinical Research Finance Operations

CTA Language Guide  
 Job Descriptions  
 Common IBD Medication Guide  
 Clinical Research Training Checklists  
 Billing Compliance  
 Clinical Research Interview Guide  
 CV Guidelines

Partner with the only healthtech company combining the power of AI technology and integrated, end-to-end clinical trial services to support scalability, efficiency, and profitability



### AI Technology

Identify more potentially eligible patients with AI-Recruitment



### Clinical Research Services

Integrate end-to-end trial recruitment services supported by leading GI clinical research experts

## Supporting Clinical Research Coordinators doesn't end at training



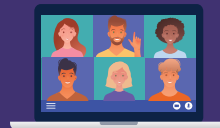
CRC Retreat at Boston HQ



Educational Live Webinars



Quarterly Newsletters



Networking Lunch & Learns

**ITERATIVE**  
HEALTH

#### About Iterative Health

Iterative Health is healthtech company and pioneer in artificial intelligence and computer vision technology for gastroenterology (GI). Through the recent acquisitions of Clinical Research Strategy Group, LLC and Precision Research, Iterative Health gained deep expertise in end-to-end GI trial recruitment services and a growing network of expert clinical research sites nationwide. Iterative Health partners with both trial sponsors and providers to optimize trial recruitment with a vision to bring world-class GI care and treatment to patients, regardless of socioeconomic or geographic barriers.

#### Contact Us



Iterative.Health  
Marketing@Iterative.Health